

SANCTUARY POINT DISTRICT LIBRARY

DEVELOPMENT APPLICATION PACKAGE

PREPARED FOR:
BREWSTER HJORTH ARCHITECTS

PREPARED BY:
TAYLOR BRAMMER LANDSCAPE ARCHITECTS PTY LTD

DWG NO	DRAWING LIST	SCALE
00	LANDSCAPE COVER SHEET	NTS
01	LANDSCAPE CONCEPT PLAN	1:200
02	LANDSCAPE SECTION ELEVATIONS	1:100

INDICATIVE PLANT LIST

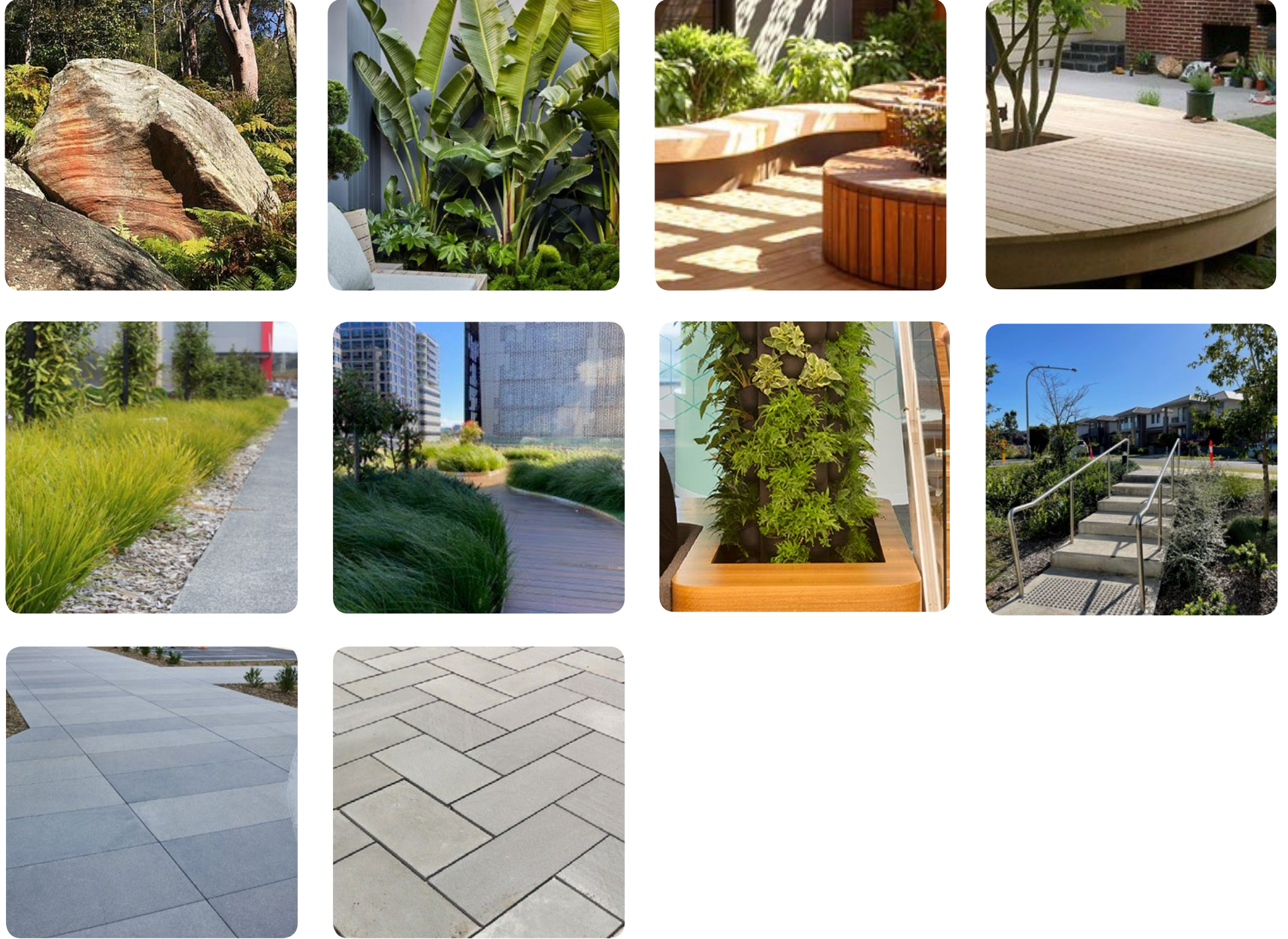
Symbol	Botanical Name	Common Name
STREET TREE		
	<i>Tristanopsis laurina</i>	Water Gum
TREES		
	<i>Corymbia maculata</i> <i>Banksia integrifolia</i>	Spotted Gum Coastal Banksia
SHRUBS		
	<i>Strelitzia nicotai</i> <i>Cycas revoluta</i> <i>Asplenium australasicum</i> <i>Blechnum cartilagineum</i> <i>Blechnum nudum</i> <i>Doodia aspera</i> <i>Todea barbara</i>	Giant white bird of paradise Sago palm Birds nest fern Gristle Fern Fishbone Water Fern Prickly Rasp Fern King Fern
GROUND COVER		
	<i>Myoporum parvifolium</i> <i>Viola hederacea</i>	Creeping Boobialla Native Violet
GRASSES		
	<i>Lomandra longifolia</i> <i>Lomandra 'lanika'</i> <i>Miscanthus sinensis</i> <i>Dianella longifolia</i> <i>Dianella revoluta</i> <i>Juncus kraussii</i>	Spiny-head mat-rush Mat Rush Chinese silver grass Blueberry Lily Blue flax-lily Sea Rush



CONTEXT



DESIGN INSPIRATION



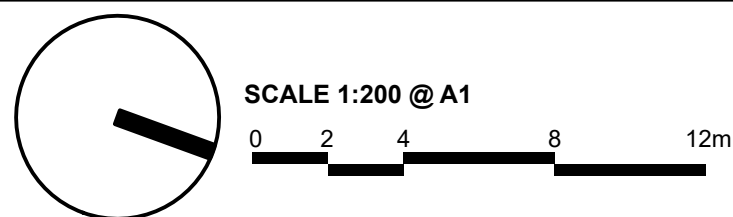


LEGEND

	SITE BOUNDARY		CONCRETE STAIRS
	EXISTING CONTOUR		ACCESSIBLE CONCRETE WALKWAY AT 1:20
	EXISTING SPOT LEVEL		ACCESSIBLE SUSPENDED WALKWAY AT 1:20
	PROPOSED SPOT LEVEL		GREEN WALL
	TOP OF WALL LEVEL		SEAT WALL
	EXISTING TREE RETAINED		RAISED PLANTER ON PODIUM
	EXISTING TREE REMOVED		SANDSTONE FEATURE BOULDER
	PROPOSED TREE PLANTING		TIMBER DECK
	PROPOSED STREET TREE PLANTING		TURF
	CONCRETE PAVEMENT		MASS PLANTING
	FEATURE PAVEMENT		HANDRAIL
	FEATURE PAVEMENT SHARED ROAD		BOLLARD
	BIKE RACK		
	GABION WALL		

DESIGN NOTES

- Informal stands of *Corymbia maculata* are set in a planted mound to highlight the native character of Sanctuary Point on this prominent edge of the building. Large sandstone boulders are loosely placed within the mounds to represent the existing rock types found in the area and are typical of such a bushland setting
- Street tree plantings of *Tristanopsis laurina* set in mulched beds of varying lengths respond to the natural character of the place
- Sea of grasses provide a softened edge to the base of the feature wall to the library facade
- Tristanopsis laurina* planting continue as a street tree to the access road that connects to Paradise Beach Road
- Concrete paving extends from the back of kerb to the face of the new library to provide space for a generator and bike parking
- Upper forecourt is characterised by feature paving to provide both access into the library but also connects to a series of large terraced steps that hug the edge of the library
- Pedestrian path set to the edge of the access road provides a connection to the public carpark, whilst ensuring the retention of the existing trees are able to be retained
- Suspended walkway floats above the garden and provides a 1:20 graded path as an option to the terraced stairs. The suspended walkway allows the levels under the existing tree canopies to be retained and ensures their long term survival
- Green wall set within the garden will be planted with an array of plants to form an Indigenous artwork. This green wall will also provide some softening to the facade of the adjacent building
- Sandstone boulders set in the garden continue in informal clumps alongside of the lower section of the 1:20 ramp. This portion of ramp will be concrete and connect through the garden bed rather than floating above the garden as there are no existing trees that are able to be retained to this area
- Entry forecourt to the Library set in feature paving provides a large enough space for groups of people to meet or traverse in all directions
- Shade trees set in the garden bed adjacent to the carparks provide shade and frame the access path that connects to Kerry Street. There is potential to include bioretention planting beds within the carpark to help filter stormwater runoff before entering the stormwater system
- Circular deck to the upper terrace sits within a sea of grasses and seat wall surround. The grasses allow views to be maintained from the terrace and also provide a sense of movement as they move in the wind
- Open terrace supports flexible seating options with views across the lower internal courtyard. A raised planter with circular seat continues with the design them of the deck
- Raised sitting deck can be accessed from all edges and provides a break out space for users to sit within the garden
- Lush plantings complete the courtyard and add to the experience of sitting in a tranquil space



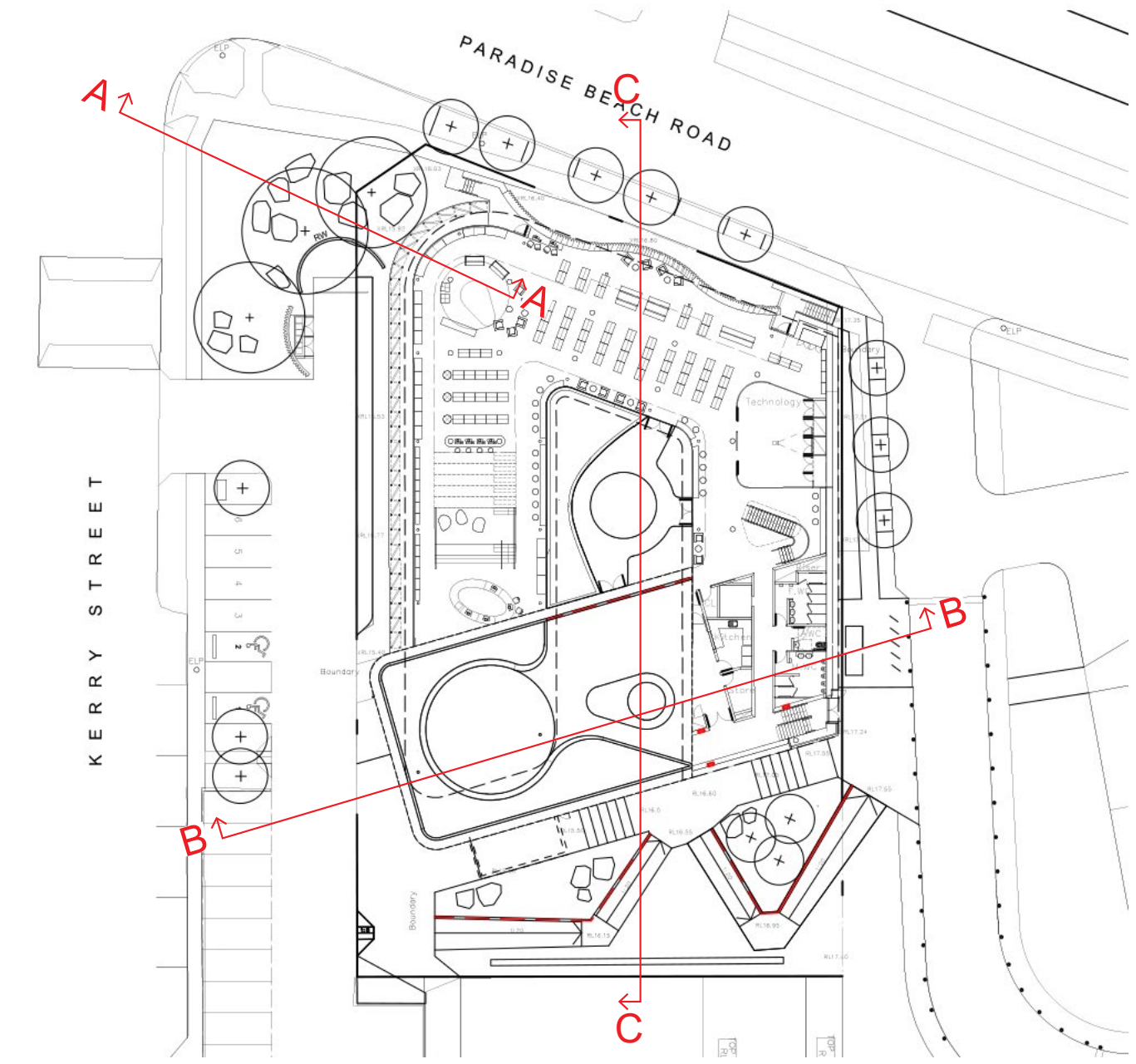
Landscape Concept Plan

Project: 20-037W, Sancturay Point District Library
Client: Brewster Hjorth Architects
Date: 19.11.2021
Purpose: DA Submission
Revision: D
Drawn: BH
Checked: JH

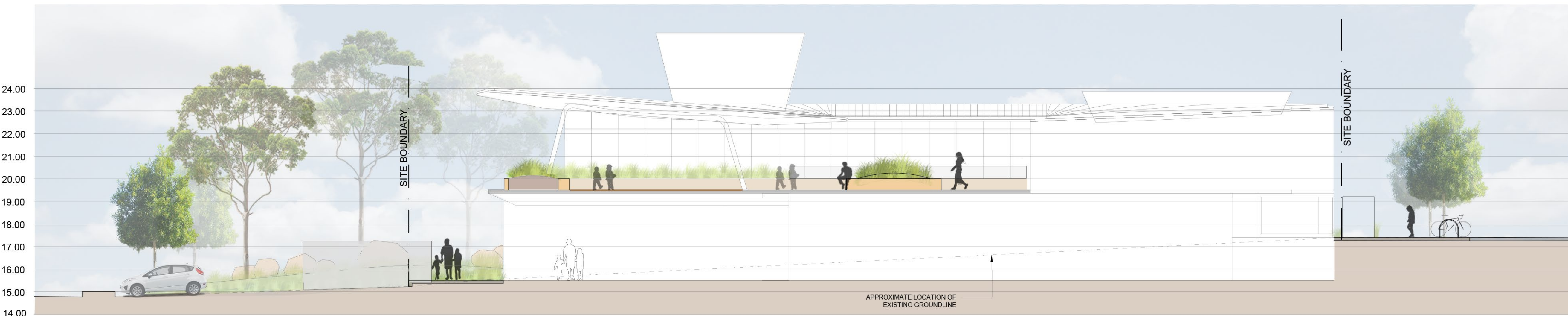
TaylorBrammer
TAYLOR BRAMMER LANDSCAPE ARCHITECTS PTY LTD
SOUTH COAST OFFICE
26 Moore Street, NSW, 2515 E southcoast@taylorbrammer.com.au T 61 2 4287 5088
Copyright of Taylor Brammer Landscape Architects Pty Ltd. AEN 61 008 724 988



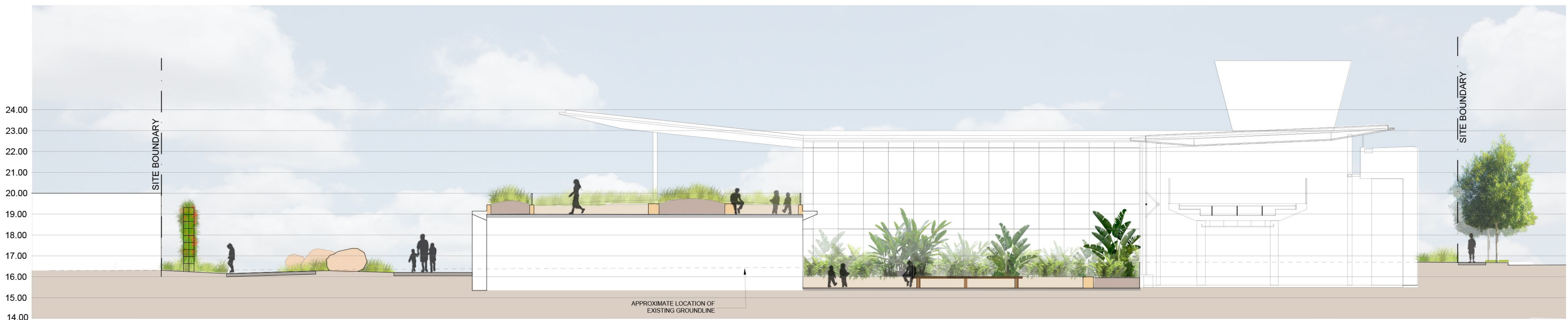
SECTION ELEVATION AA 1:100



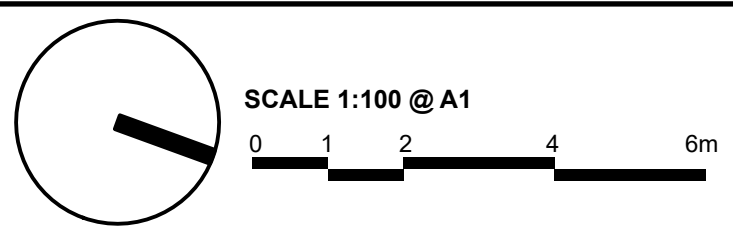
KEY PLAN



SECTION ELEVATION BB 1:100



SECTION ELEVATION CC 1:100



Landscape Section Elevations

Project: 20-037W, Sancturay Point District Library
Client: Brewster Hjorth Architects
Date: 19.11.2021
Purpose: DA Submission
Revision: D
Drawn: BH
Checked: JH

TaylorBrammer
 TAYLOR BRAMMER LANDSCAPE ARCHITECTS PTY LTD
 SOUTH COAST OFFICE
 26 Moore Street, NSW, 2515 E southcoast@taylorbrammer.com.au T 61 2 4287 5088
 Copyright of Taylor Brammer Landscape Architects Pty Ltd. AEN 61 008 724 985